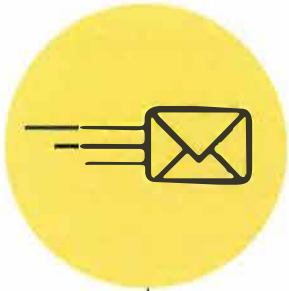


3 WAYS TO VOTE

IN THE 2024 GENERAL ELECTION

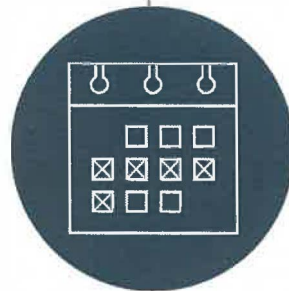


1. VOTE-BY-MAIL (VBM)

Contact the County Clerk's Office to receive a VBM application.

WANT TO STOP VOTING-BY-MAIL?

- Visit the County Clerk's Office website to complete the VBM opt-out form - www.passaiccountyclerk.org.
- Opt-Out forms received after **September 3, 2024**, will be processed after the certification of the November 2024 General Election.



2. EARLY VOTING

Visit one of Passaic County's regional Early Voting Sites before Election Day to vote in person, on a machine.

EARLY VOTING PERIOD

- Saturday, October 26 through Sunday, November 3
- Monday through Saturday, 10:00 a.m. to 8:00 p.m.
- Sunday, 10:00 a.m. to 6:00 p.m.
- No appointment necessary



3. ELECTION DAY VOTING

Proceed to your assigned polling location on Election Day to vote on a machine.

ELECTION DAY

- Tuesday, November 5, 2024
- Polls are open 6 a.m. to 8 p.m.
- Your polling location is listed on your sample ballot.



2024 GENERAL ELECTION VOTING GUIDE

SUPERINTENDENT OF ELECTIONS

Shona Mack-Pollock, Superintendent of Elections
& Commissioner of Registration
501 River Street
Paterson, New Jersey 07524
(973) 881-4515
soelections@passaiccountynj.org
www.passaiccountynj.org/soe

CLERK'S OFFICE: ELECTIONS DIVISION

Danielle Ireland-Imhof, Passaic County Clerk
401 Grand Street, Room 130
Paterson, New Jersey 07505
(973) 881-4127
countyclerkelections@passaiccountynj.org
www.passaiccountyclerk.org

BOARD OF ELECTIONS

Ken Hirmann, Office Administrator
401 Grand Street, Room 123
Paterson, New Jersey 07505
(973) 881-4780
www.passaiccountynj.org/boardofelections