



DRESDNER  
ROBIN

# Connecting Ringwood

BOROUGH COUNCIL MEETING  
AUGUST 20, 2024



# Scope of Work

## Tasks

1. Existing Plan Review and Implementation Plan
2. Identify Property Ownership
3. Existing Trails and Safety Issues
4. Needs Analysis and New Trails
5. Project Prioritization
6. Project Cost Estimates
7. Wayfinding Recommendations and Best Practices
8. Insurance and Liability Recommendations
9. Quarterly Reports
10. Final Report

# Acknowledgements

This plan benefited greatly from the invaluable participation and insightful contributions from members of the community of Ringwood, New Jersey.

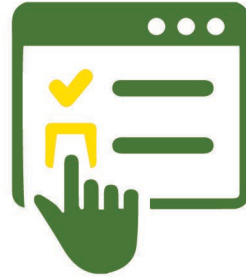


# Outreach & Engagement

“

*Dedicated walking and bike paths would make Ringwood a more desirable place to live and visit.*

**Ringwood Survey Respondent**



**317**

**RESIDENTS**  
TOOK THE SURVEY



**13**

**STAKEHOLDER**  
INTERVIEWS



# Key Takeaways

OVER  
**80%**  
OF RESPONDENTS  
FEEL THEIR COMMUNITY  
WOULD BE A BETTER PLACE  
TO LIVE IF MORE PEOPLE  
WALKED OR BIKED



OVER  
**70%**  
OF RESPONDENTS  
WOULD SHOP OR DINE MORE  
AT LOCAL BUSINESSES  
IF IT WERE CONVENIENT & SAFE  
TO WALK OR RIDE A BICYCLE

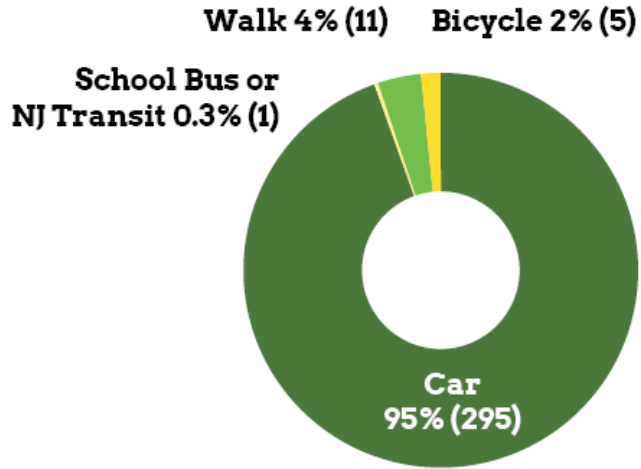
OVER  
**68%**  
OF RESPONDENTS  
WALK 2-3 TIMES PER WEEK  
FOR RECREATION OR EXERCISE  
OVER 80% AT LEAST ONCE A WEEK

ONLY  
**27%**  
OF RESPONDENTS  
FEEL COMFORTABLE BIKING  
ON A ROADWAY WITH A  
SHOULDER ONLY  
(NO DEDICATED BICYCLE LANE OR MARKINGS)

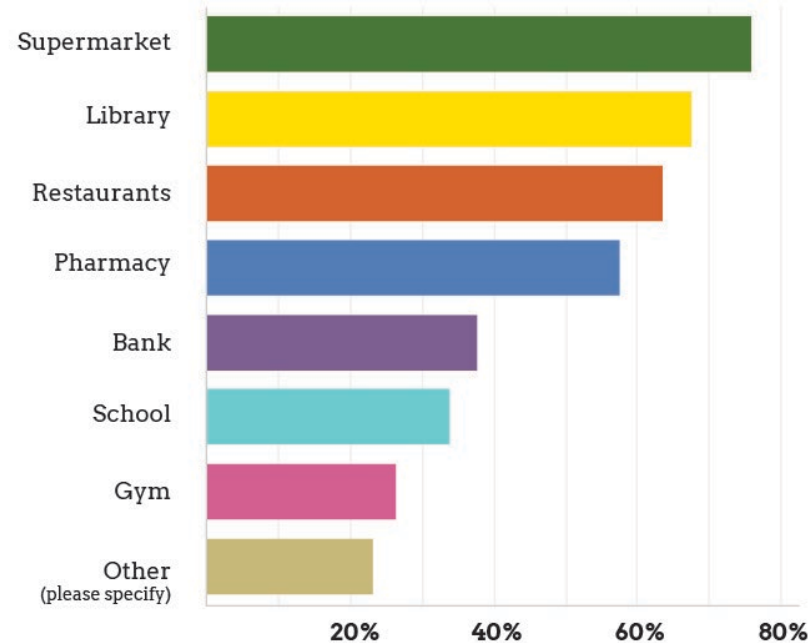
ONLY  
**40%**  
OF RESPONDENTS  
FEEL COMFORTABLE WALKING ON A  
ROADWAY WITH A SHOULDER ONLY

# Key Takeaways

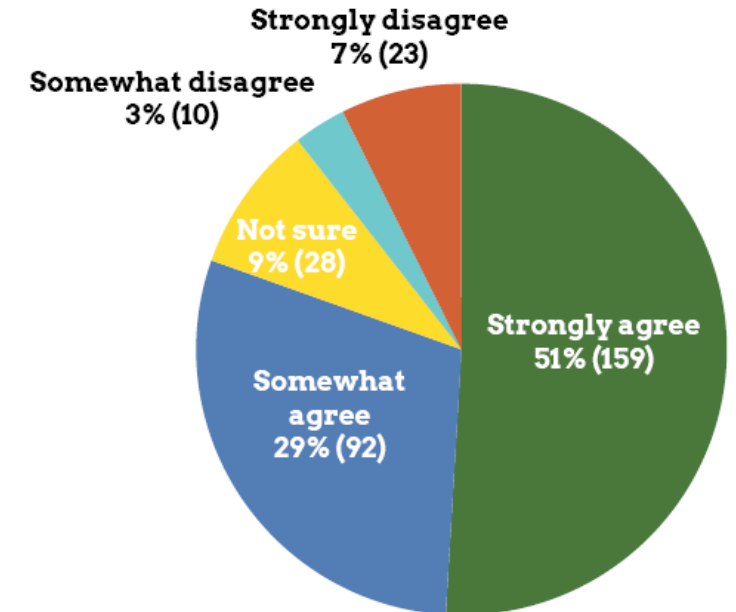
Of all the ways you get around, which do you use most often?



Where would you like to go within Ringwood if you could get there via walking trails or bike paths (check all that apply)?



I would like to walk for errands, shopping, and other activities within Ringwood more than I do now.



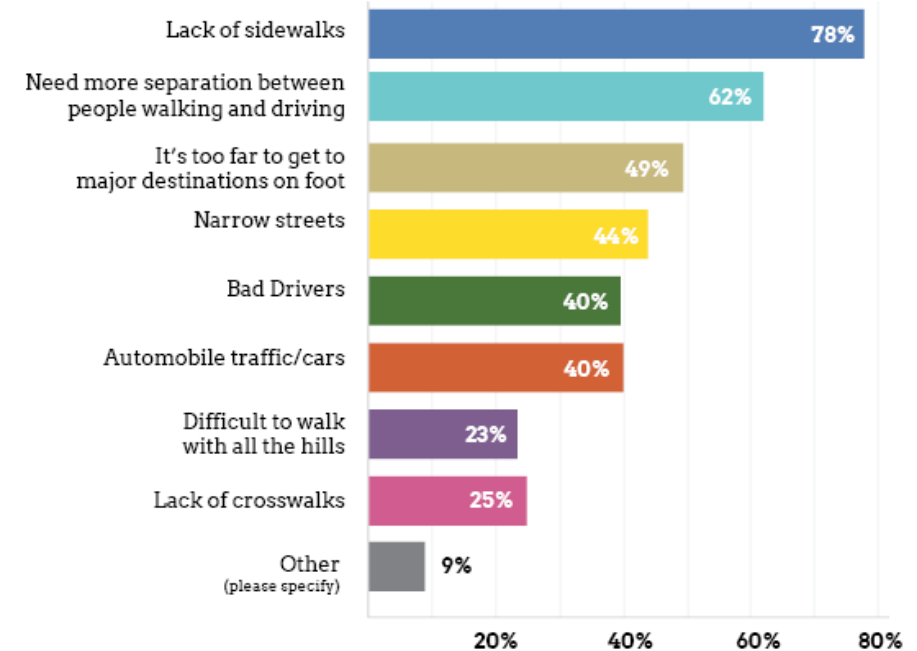
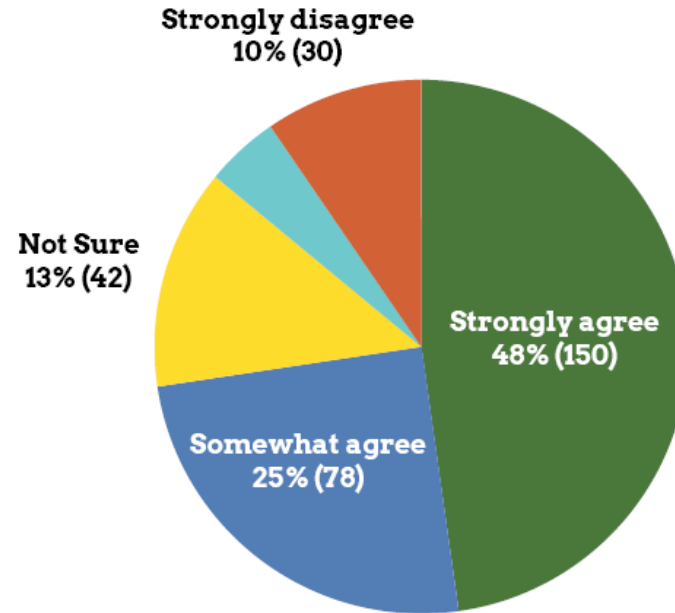
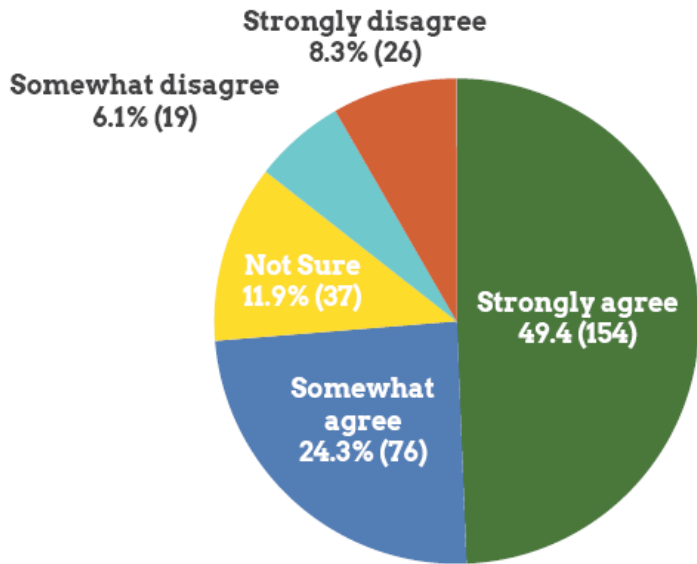


# Key Takeaways

**I would like to bike for errands, shopping, and other activities within Ringwood more than I do now.**

**I would shop and/or dine more in Ringwood if it were convenient and safe to walk or bicycle to local businesses.**

**Regardless of how you personally get around, what would you say are the biggest challenges for people walking to get around in Ringwood (select all that apply)?**



# Project Website

The screenshot shows the home page of the Ringwood Economic Sustainability Trails & Tourism Plan website. At the top left is the Ringwood Borough logo, followed by the title "Ringwood Economic Sustainability Trails & Tourism Plan" and navigation links for "ABOUT", "SURVEY RESULTS", and "VIEW THE MAP". The main header features a green background with a landscape image and the text "BOROUGH OF RINGWOOD" and "ECONOMIC SUSTAINABILITY TRAILS & TOURISM PLAN". Below this is the tagline "Connecting our parks, lake communities, trails, and businesses." and a yellow "GET INVOLVED" button. The lower section is titled "GET INVOLVED" and "WAYS TO CONTRIBUTE", featuring three white cards: "TAKE THE SURVEY" (with a checkmark icon), "INTERACTIVE MAP" (with a location pin icon), and "ATTEND AN EVENT" (with a bicycle icon). Each card contains a brief description of the activity.

Ringwood Economic Sustainability Trails & Tourism Plan

ABOUT SURVEY RESULTS VIEW THE MAP

BOROUGH OF RINGWOOD

## ECONOMIC SUSTAINABILITY TRAILS & TOURISM PLAN

Connecting our parks, lake communities, trails, and businesses.

GET INVOLVED

GET INVOLVED

### WAYS TO CONTRIBUTE

**TAKE THE SURVEY**  
Fill out our Community Input survey to tell us about how you get around Ringwood.

**INTERACTIVE MAP**  
Contribute to the map and tell us more about where you walk and bike in Ringwood.

**ATTEND AN EVENT**  
We will be hosting several public events in the fall of 2022 to gather input from the community.

The screenshot shows the "Participate" page of the website. It features the same header as the home page. The main heading is "PARTICIPATE" followed by "WHERE DO YOU WALK OR BIKE IN RINGWOOD?". Below this is a paragraph explaining the online community survey. A dark green button with a checkmark icon says "FILL OUT THE ONLINE SURVEY". The next section is titled "CONTRIBUTE TO THE MAPS" and includes a paragraph about interactive maps. Below this are two dark green buttons: "ADD A DESTINATION" and "ADD A TRAIL". The final section is "SUBMIT A DESTINATION", which contains three numbered steps with checkboxes: Step 1 (Zoom in to a place you already go to or would like to get to walking or biking), Step 2 (Tell us about how you currently or would like to get there and a little more about that location), and Step 3 (Click SUBMIT. If you like you to provide additional locations, simply refresh the form. You have an unlimited number of submissions but can only submit one point at a time).

Ringwood Economic Sustainability Trails & Tourism Plan

ABOUT SURVEY RESULTS VIEW THE MAP

PARTICIPATE

## WHERE DO YOU WALK OR BIKE IN RINGWOOD?

Below is a link to our Online Community Survey. We appreciate you taking the time to provide critical input for developing this plan.

FILL OUT THE ONLINE SURVEY

### CONTRIBUTE TO THE MAPS

In addition, below are interactive maps where you can tell us more about where and how you walk and bike around town. We will use the feedback you provide to help us prioritize projects and improve safety for people walking and biking. The interactive map works best on laptops and desktop computers.

ADD A DESTINATION

ADD A TRAIL

#### SUBMIT A DESTINATION

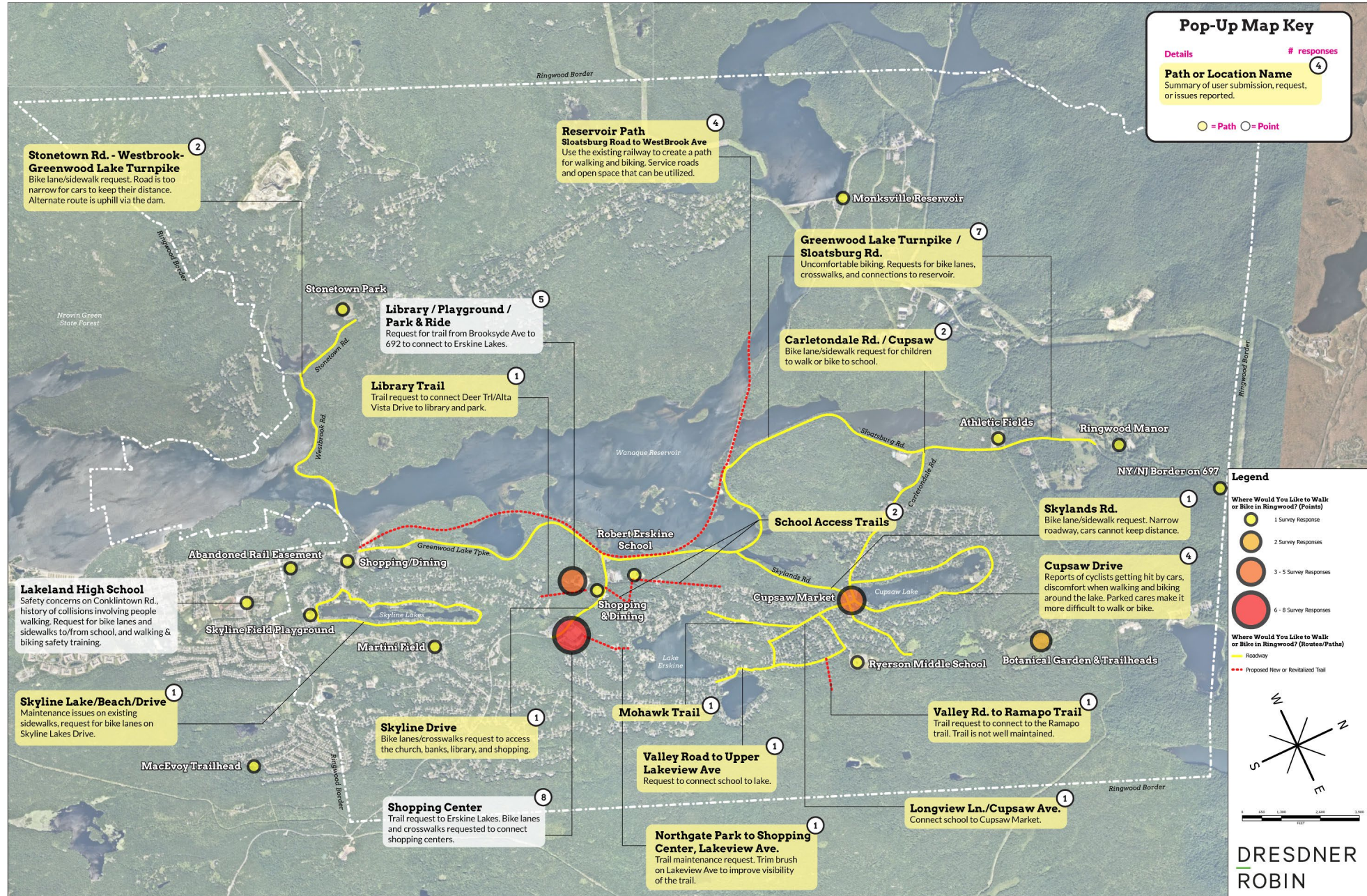
Step 1: Zoom in to a place you already go to or would like to get to walking or biking.

Step 2: Tell us about how you currently or would like to get there and a little more about that location.

Step 3: Click SUBMIT. If you like you to provide additional locations, simply refresh the form. You have an unlimited number of submissions but can only submit one point at a time.



# Ringwood Community Input Map











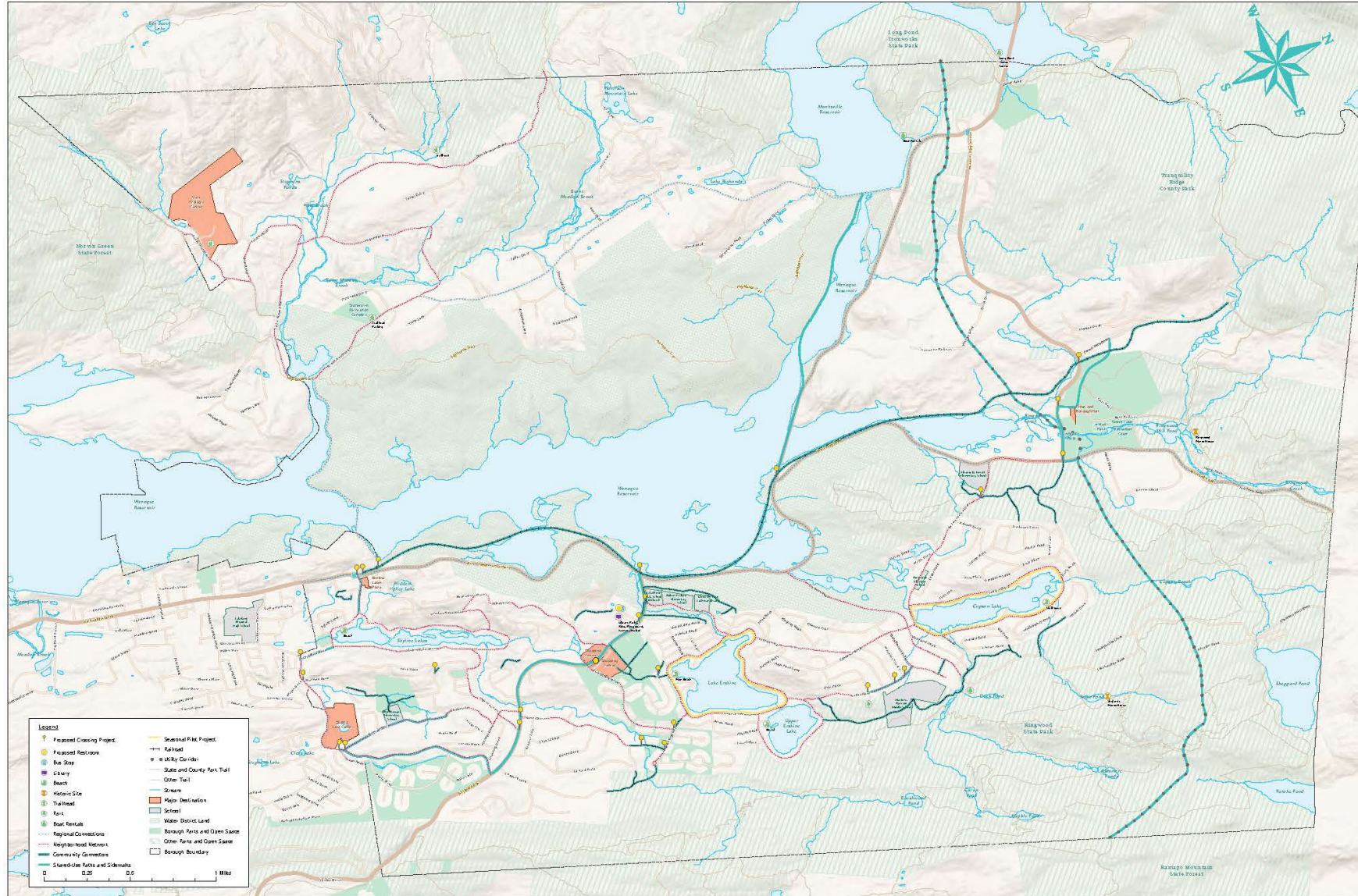


# Recommendations

Project recommendations are strategically categorized into distinct categories, each serving a unique purpose in enhancing pedestrian and bicycle infrastructure.

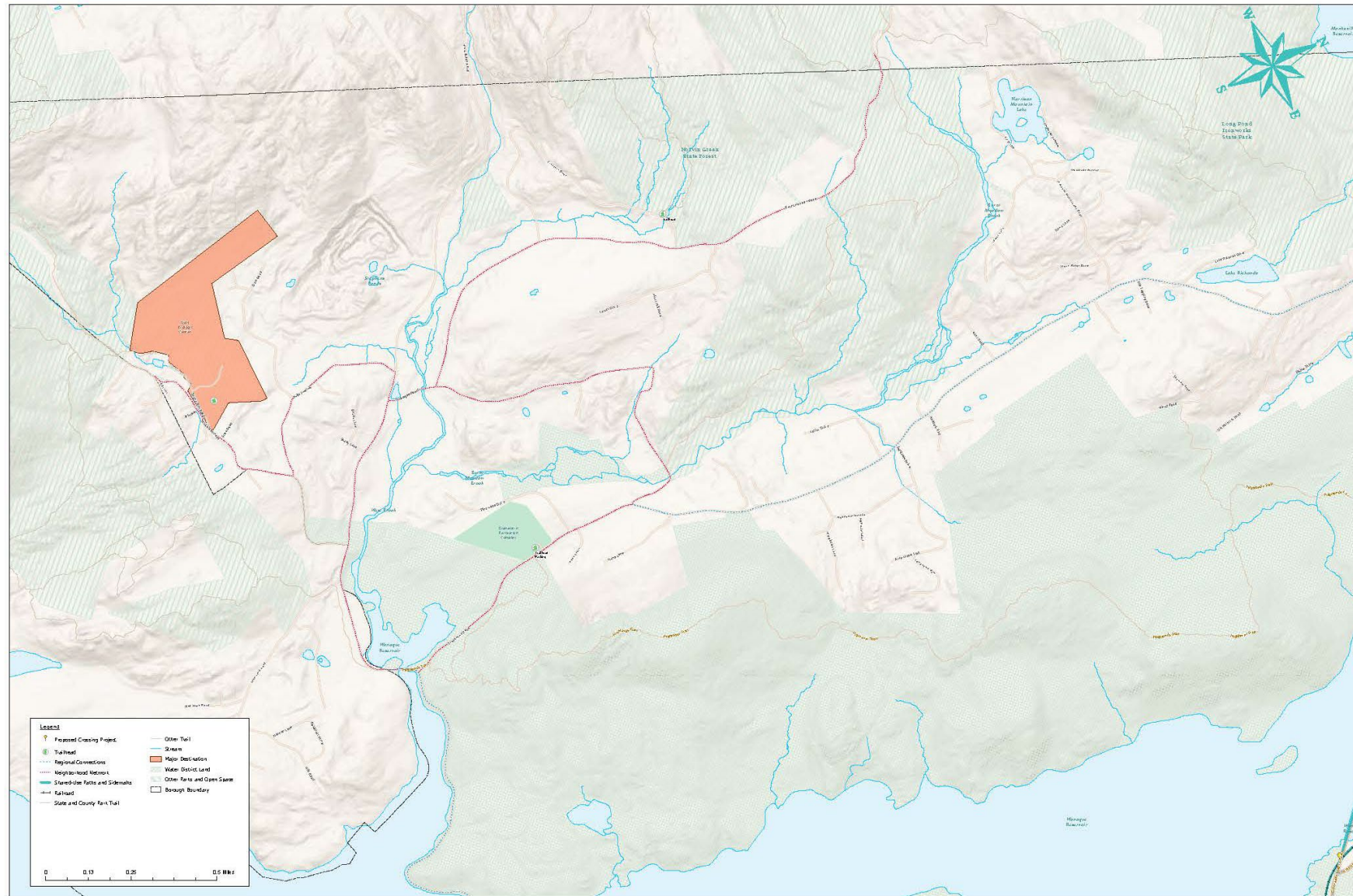
- **Community Connectors** – The Community Connectors create a network of trails and paths through existing rights of way, public land, and legal easements.
- **Neighborhood Network** – The Neighborhood Network is envisioned as a series of quieter, residential streets adorned with on-street shared lane markings tailored for people biking, complemented by potential traffic calming measures.
- **Shared-Use Paths and Sidewalks** – By providing dedicated spaces, these Shared-Use Paths and Sidewalks promote safe and convenient travel, particularly connecting to key destinations
- **Regional Connections** – This network includes bicycle and pedestrian improvements along county roadways, rail, and utility corridors and require further study and coordination.
- **Crossing Improvements** – Enhancing safety for people walking and biking at intersections is a critical aspect of creating more walkable and livable communities.
- **Programs & Pilot Projects** – Introducing programs and pilot projects to promote walking and biking within a community a concerted effort to foster healthier, more sustainable lifestyles while enhancing economic development and community vibrancy.

# PROJECT RECOMMENDATIONS



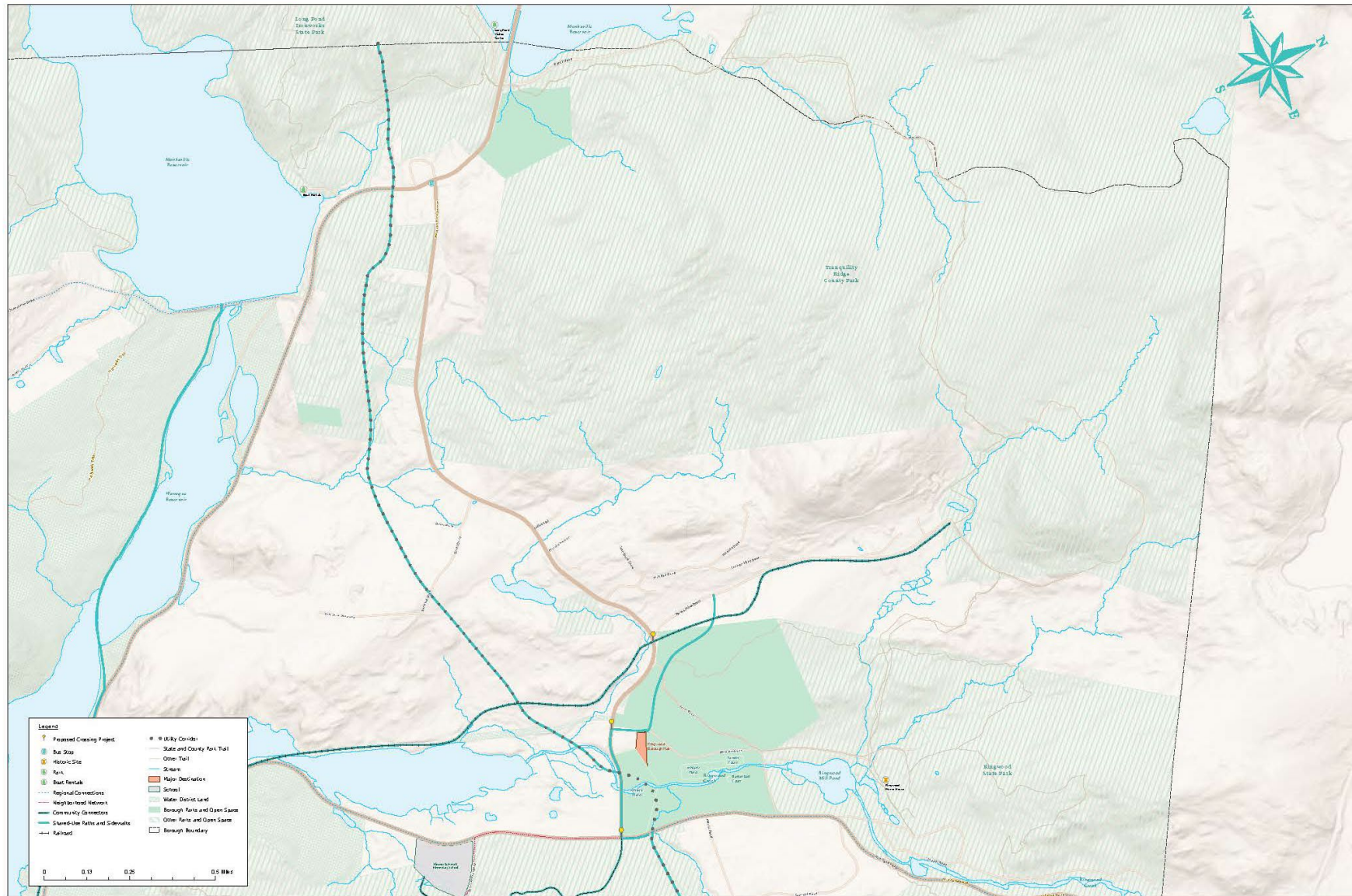


# STONETOWN



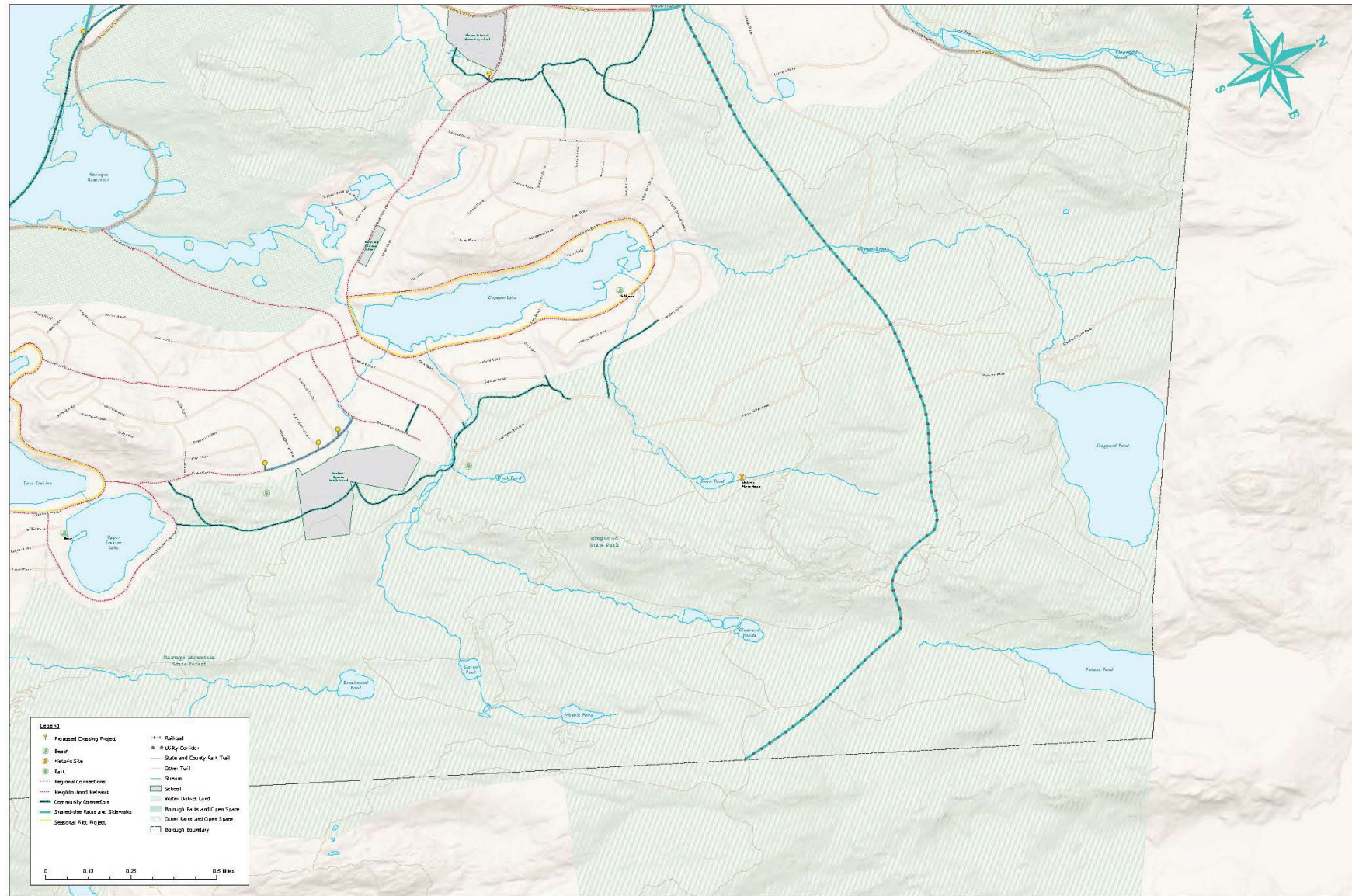


# UPPER RINGWOOD



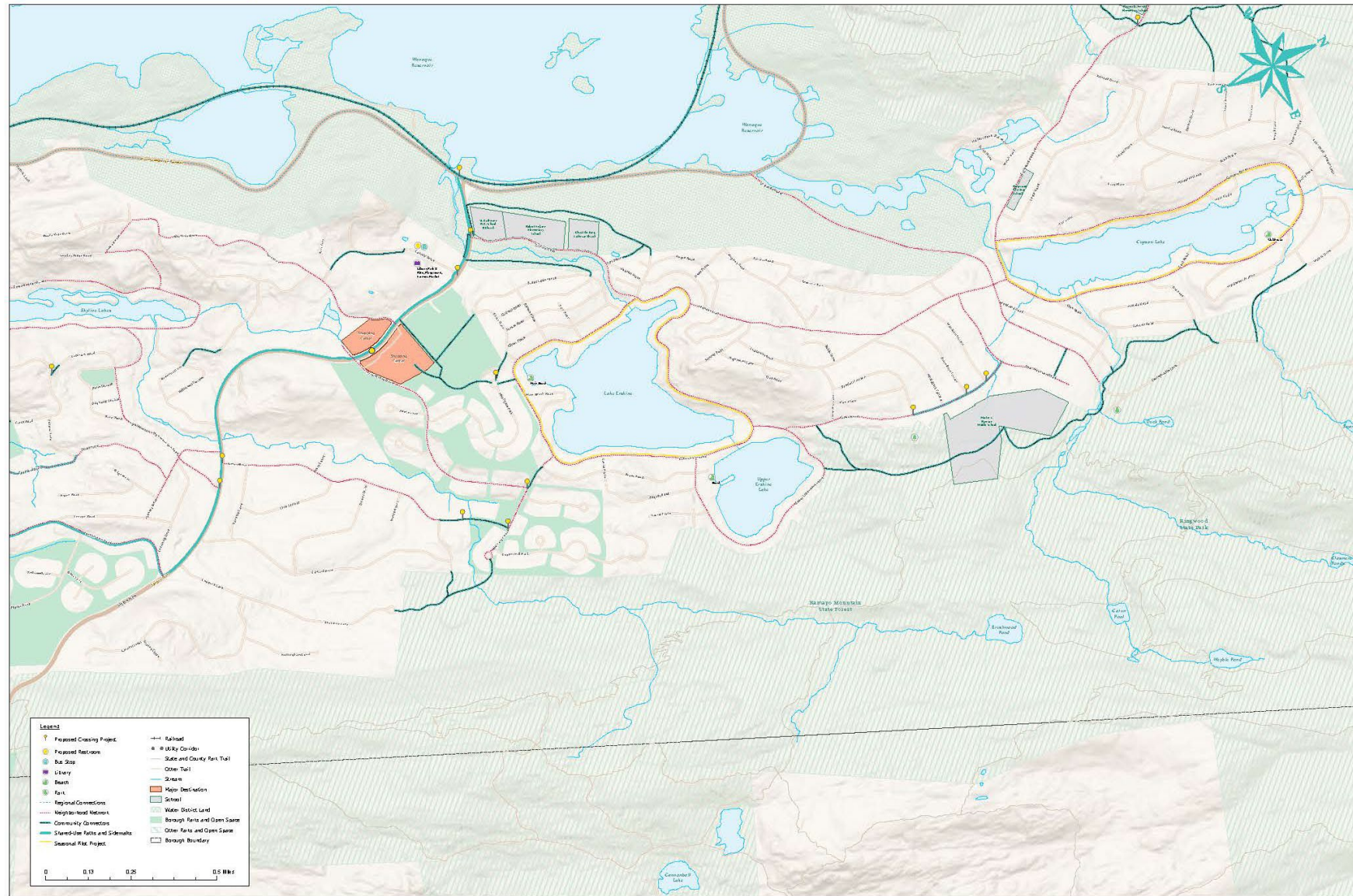


# CUPSAW LAKE



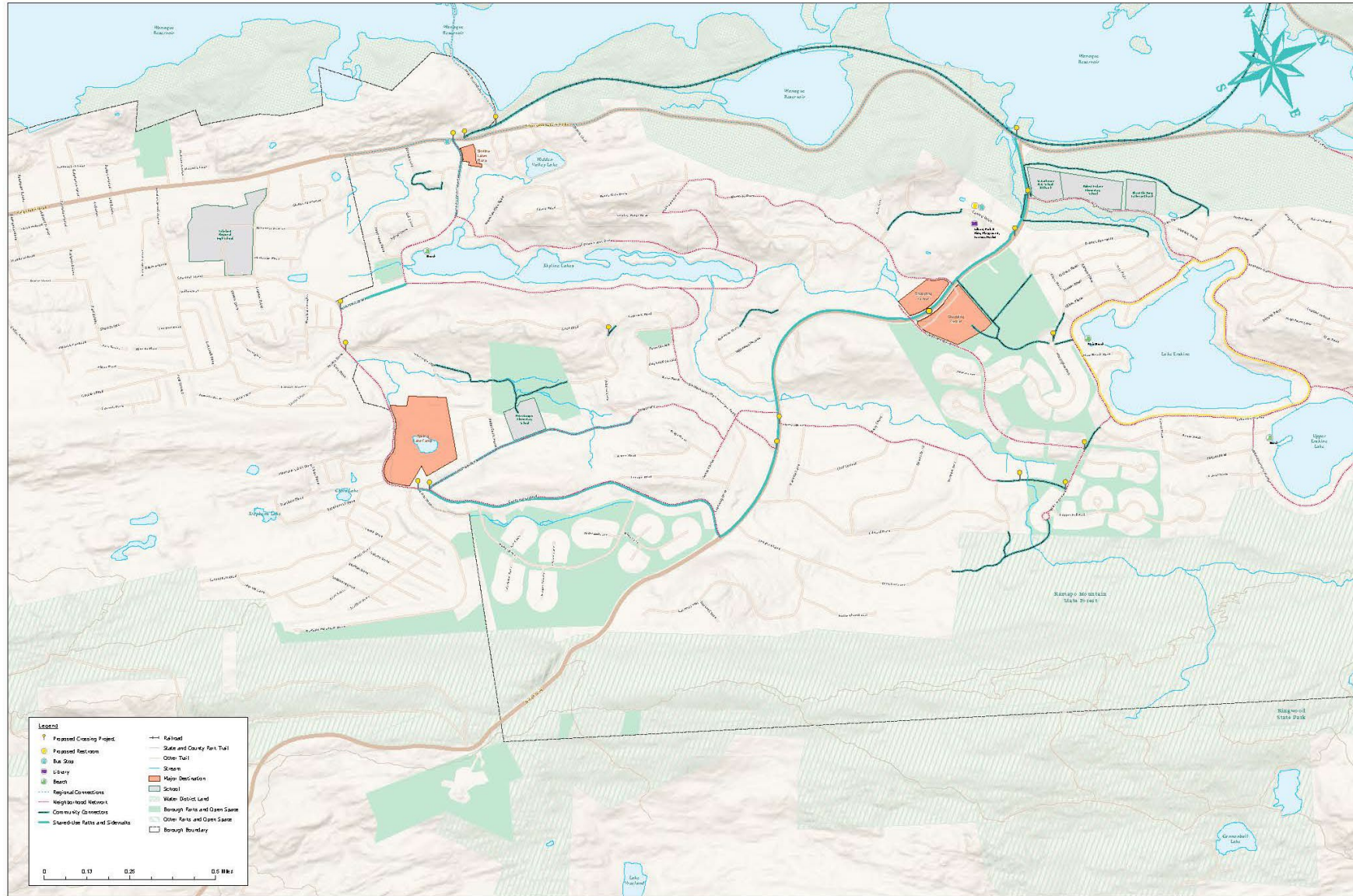


# ERSKINE LAKES





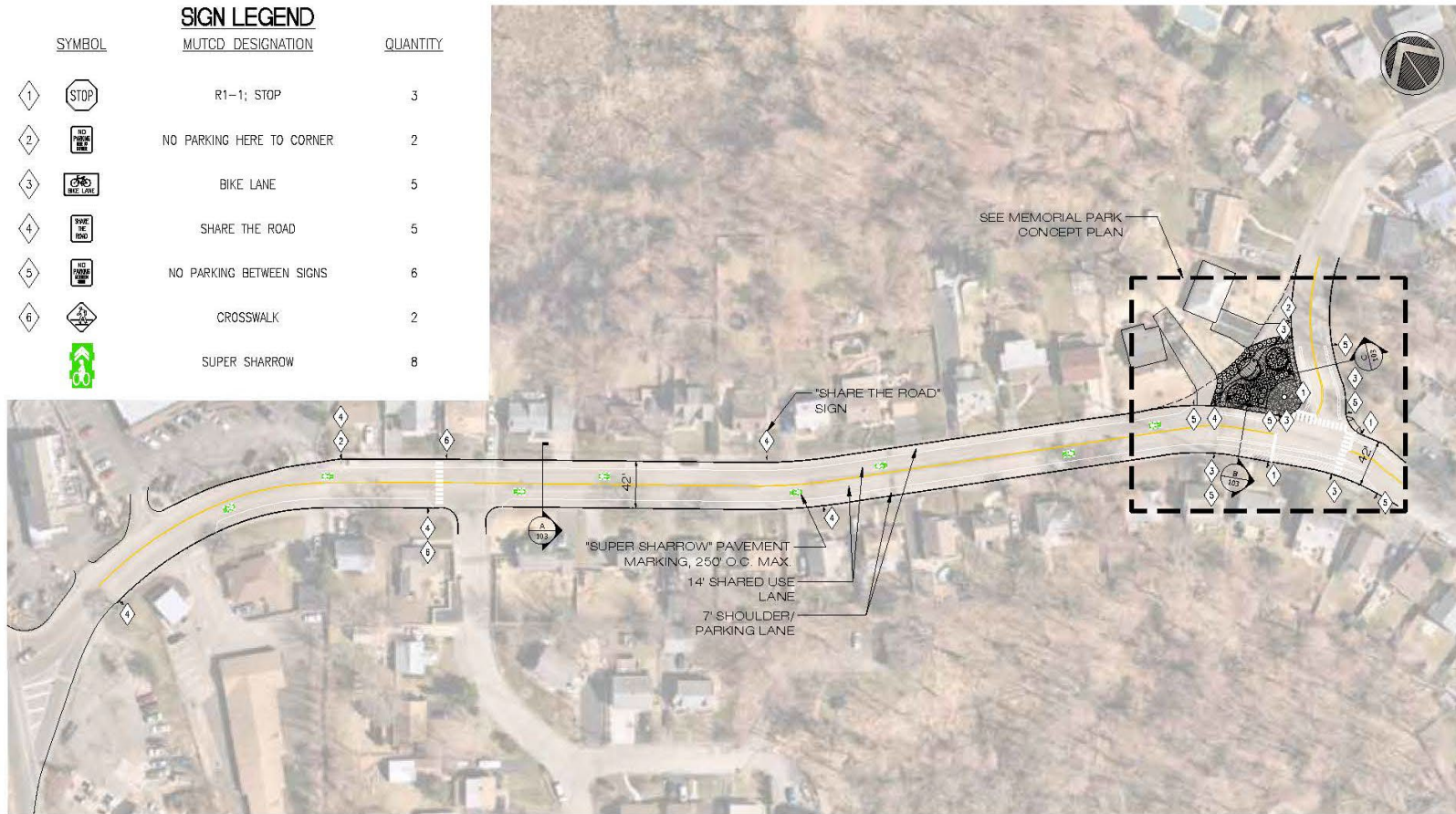
# SKYLINE LAKES





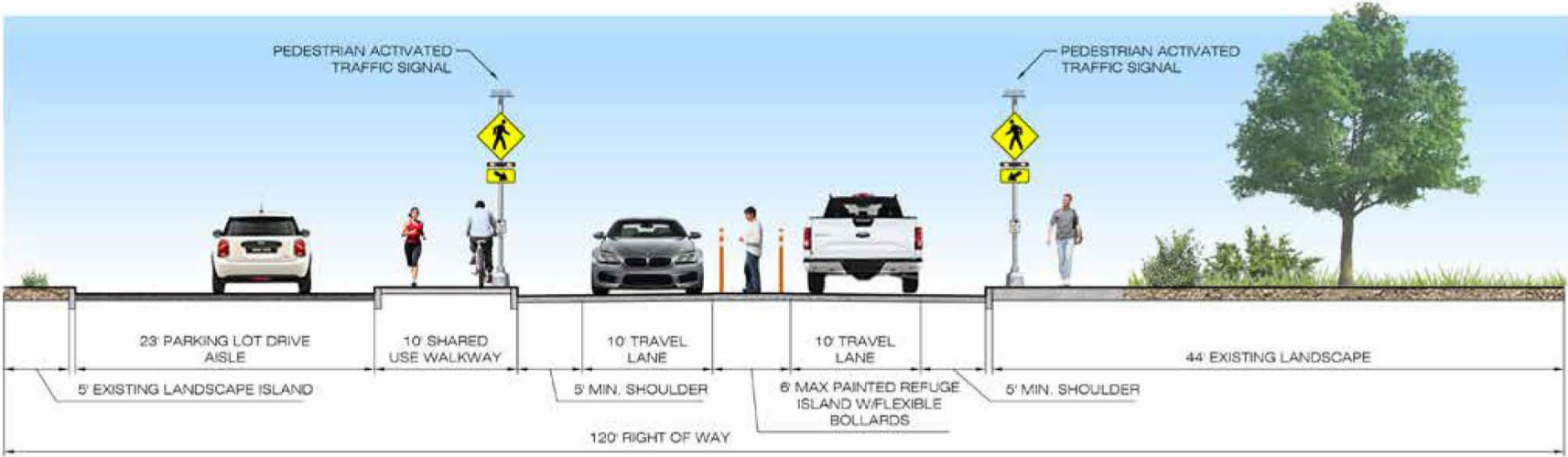
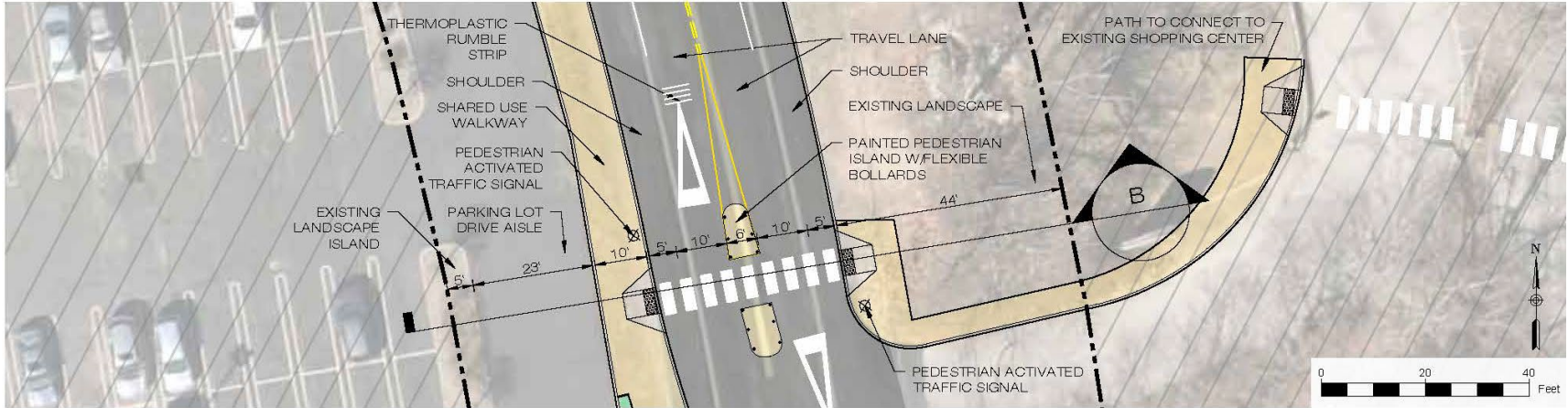
# SKYLINE LAKES DRIVE CONCEPT #1

## REMOVAL OF MEDIAN, BICYCLE SHARED LANE MARKINGS, AND INTERSECTION REDESIGN



# SKYLINE DRIVE CONCEPT PLAN

## CROSSWALK WITH PEDESTRIAN ACTIVATED BEACON



# Economic Development

“

*I'd love a way to get between the areas like the library and shops across Skyline Drive with my kids. It's such a pretty area but you're forced on to horrible, busy roads.*

**Ringwood Survey Respondent**

- Develop a Comprehensive Marketing Strategy
- Leverage Natural Assets
- Support Local Businesses
- Invest in Infrastructure
- Foster Collaboration
- Create Events & Festivals
- Engage the Community
- Diversify the Economy



# Signage & Wayfinding

Improving wayfinding and signage for walking and biking access is essential for guiding pedestrians and cyclists safely and efficiently through urban and suburban environments.





# Community and Trail Signage



*Historic Ringwood Welcome Sign*



*Borough Limits Sign*



*Trailhead Sign*



*Trail Directional Context Sign*

# Bicycle and Pedestrian Route Signage



*Standard Bike Route Signs*



*Confirmation Sign*



*Turn Sign*



*Community Connector Signage*



# Branded Roadway Signage



*Branded Wayfinding Signs*





# Insurance Considerations

- Insurance Liability Exposure
- Legal Easements with Protective Measures
- Maintenance & Inspections
- Signage and Public Awareness
- Insurance Coverage & Legal Review





# Amenities

- Trailheads
- Informational Signage
- Parking Areas
- Bicycle Parking



**SOUTH COUNTY TRAILWAY**

FOR YOUR SAFETY AND ENJOYMENT PLEASE OBSERVE

**TRAIL CLOSES AT DUSK.**

- STAY TO RIGHT
- BICYCLISTS MUST WEAR A HELMET
- USE REASONABLE & CONTROLLED SPEED
- WALK BICYCLES ACROSS ROADWAY CROSSINGS
- BE COURTEOUS & CONSIDERATE
- DO NOT LITTER
- CARRY IN CARRY OUT
- DOGS MUST BE LEASHED
- CLEAN UP AFTER YOUR PET
- NO MOTORIZED VEHICLES

**WE NEED YOUR HELP**  
If you witness graffiti/vandalism on the trail, please call the Westchester County Police Tip Line: (914) 741-4334

**CAUTION AHEAD**  
Erosion may have caused cracked or uneven surfaces, walk and ride safely.

**Legend**  
Trailway  
Trail on Road Shoulder  
Parking Areas  
Trail Access Points  
Mile Markers  
Fix & Station  
Stretch Station  
County & State Parks  
Local Parks & Open Space

**Westchester SMART TRAILWAY**  
SCAN QR

**HSS Westchester**  
U.S. #1 in Orthopedics **HSS**

EMERGENCY 911 POLICE FIRE MEDICAL Mile 14.25

Westchester.gov.com

INDIVIDUALLY SUPPORTED BY WESTCHESTER COUNTY PARKS

AAA WESTCHESTER PARKS FOUNDATION

GREENWAY



DRESDNER  
ROBIN

Questions?

